

Unitron Colours

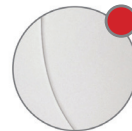
unitron™



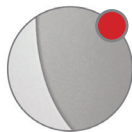
Teal Blast



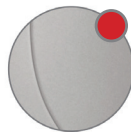
Sand Storm



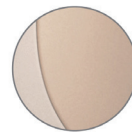
Platinum



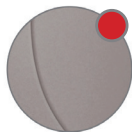
Pewter Shine



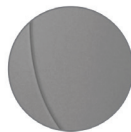
Pewter



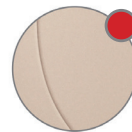
Espresso Boost



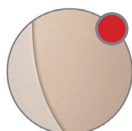
Espresso



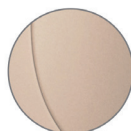
Charcoal



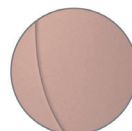
Beige



Amber Suede



Amber



Cinnamon

● Colours available for Moxi Fit-R

To hide or disguise your device further you may wish to ask your clinician at the time of the appointment, which hearing aid either matches your skin tone or hair colour the most. **Visit: www.eardeals.com.au for more information**